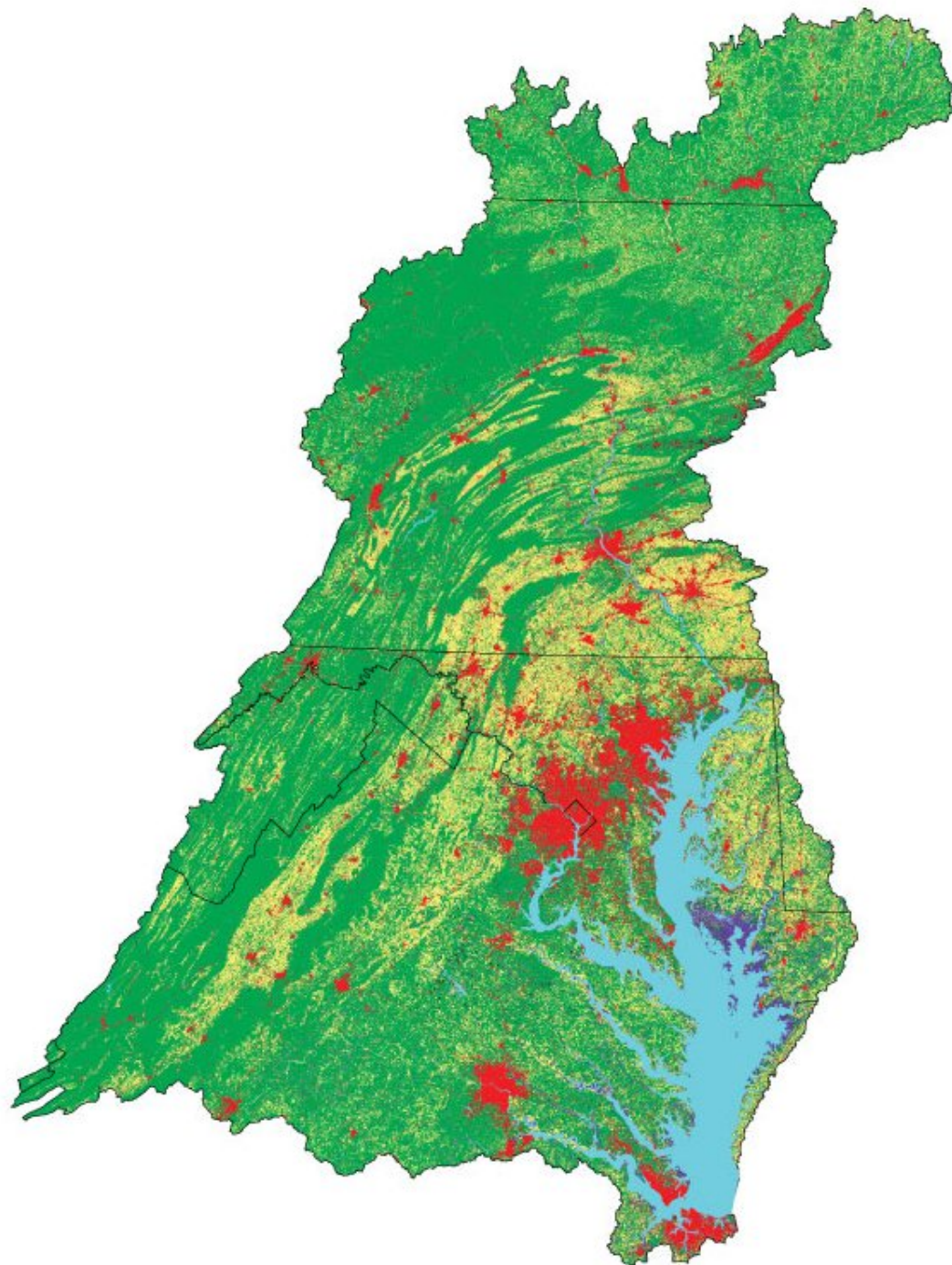


# CONNECTING WOODLAND OWNERS TO MARKETS

**ERIC SPRAGUE**

**ALLIANCE FOR THE CHESAPEAKE BAY**



IT SHOULD BE EASY  
TO CREATE HEALTHY  
FORESTS



# OUR APPROACH



**CONSERVATION  
FUNDING  
DISCOVERY**

**FUNDING  
ASSESSMENTS**

**FACILITATION**







# CRITICAL AREA PRESERVATION ACT

# Critical Area Commission

# Within 1,000 feet of tidal waters and wetlands

# No-net-loss

# Onsite, offsite, fee-in-lieu

Forest buffers, forest cover,  
Forest interior dwelling  
species (and stormwater)

St. Mary's County - Camp Brown TM 73 P 28




1 inch equals 897.49 feet

# FOREST CONSERVATION ACT

Maryland Forest Service

Development projects  
over 40,000 square feet

Types: existing forest,  
new forest (forest  
health?)



Woodland Crediting Platform

Welcome Eric [Logout](#)

[My Projects / Add a Project](#)

[My Account](#)

[Admin Dashboard](#)

STEP 1:  
Project Information

STEP 2:  
Project Baseline

STEP 3:  
Project Design

STEP 4:  
Project Verification

STEP 5:  
Project Certification

STEP 6:  
Registration

STEP 7:  
Issuance

STEP 8:  
Project Monitoring

PROJECT:  
Airview Farm


[Project Boundary](#)

[Map Units](#)

[Field Datasheets](#)

[Baseline Data](#)

Submit Baseline



credit types being generated, and entered baseline estimates for each credit type into the WCP.

Please click the "Continue" button below to submit the project's baseline information to the Local Administrator. If all the documentation and calculations are in order, you will be invited to proceed with project design. Please keep in mind that, once baseline conditions have been approved, they may not be altered by the project developer without the assistance of the Local Administrator.

Map unit 1: Maryland Forest Conservation Act

ESTIMATED CREDITS  
13.00 acres

Map unit 2: Maryland Forest Conservation Act

ESTIMATED CREDITS  
5.00 acres

Map unit 3: Water Quality: New Forest with long-term protection (Riparian Forest)

ESTIMATED CREDITS  
WQ: Riparian Forest: Nitrogen 248 lbs  
WQ: Riparian Forest: Phosphorus 24 lbs  
WQ: Riparian Forest: Sediment 21,215 lbs

Map unit 4: Water Quality: New Forest with long-term protection (Riparian Forest)

ESTIMATED CREDITS

Continue

# WOODLAND CONSERVATION LOAN FUND

Prince George's,  
\$20–40K/ac

Frederick, \$4–8K/ac  
Howard, \$15–22K/ac  
Charles, \$2K/ac

Barriers to entry

Harness private  
investments

Repayment with  
credit sales, etc.

Project Information

Project Baseline

Project Design

Project Verification

Project Certification

Credit Registration

Credit Issuance

Project Monitoring

PROJECT:  
Hunt Forest

Design Boundary

Map Units

Design Data

Credit Estimates

Release Schedule

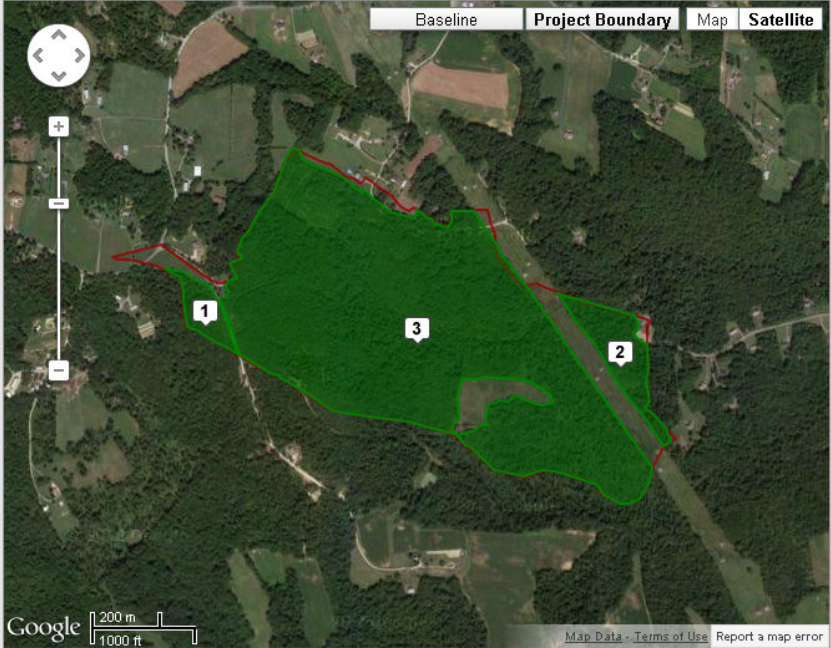
Submit Design

Baseline

Project Boundary

Map

Satellite



Credits

Click on "Edit" or "New" to begin designing your projects. You will need to complete the credit calculators for every credit type to reflect your proposed project design conservation actions. Once you have designed each project, click "continue" to generate your credit estimates.

A: Forest Conservation Credit	EDIT
ESTIMATED CREDITS 4.92 credits	
B: Forest Conservation Credit	EDIT
ESTIMATED CREDITS 10.57 credits	
C: Forest Conservation Credit	EDIT
ESTIMATED CREDITS 159.89 credits	

Continue

© Copyright 2012 Bay Bank | Design & development by The Other Firm

About Us

FAQs

Security/Privacy Policy

Contact Us





Arabella Advisors, Altria Group, USDA  
Forest Service, USDA Natural Resource  
Conservation Service